

**Crompton**

Home Appliances



**Air  
Cooler**

Cooling Nahi,  
***Jaldi Cooling***

**Crompton**



LET'S  
HANGOUT  
GHAR PE!



For more than 85 years, our brand has stood for trust, reliability, dependability and excellence in the area of electrical engineering. We endeavour to provide meaningful benefits, ease of use, great design, superior performance and durability at the right price for our customers. Our range of innovative products caters to modern consumer needs like easy to clean (Anti-Dust) Fans, easy to maintain Air Coolers, Hygienic Lighting solutions (Anti-Bac LEDs) Pumps and many more. Today we are Proud Indian Brand and a Market Leader\* in the Category of Fans with a strong presence in the other categories like pumps, water heaters, air coolers, kitchen appliances and lighting.

To enhance the comfort of its users, Crompton has launched a range of coolers with Superior Cooling Performance, Advance Technology, Consumer-Friendly and Healthy & Hygienic Environments. Combining it with service network of 365+ touch points all over India, Crompton strives to enhance cooling comfort for its consumers.

**Crompton**

# Cooling Nahi, ***Jaldi Cooling***





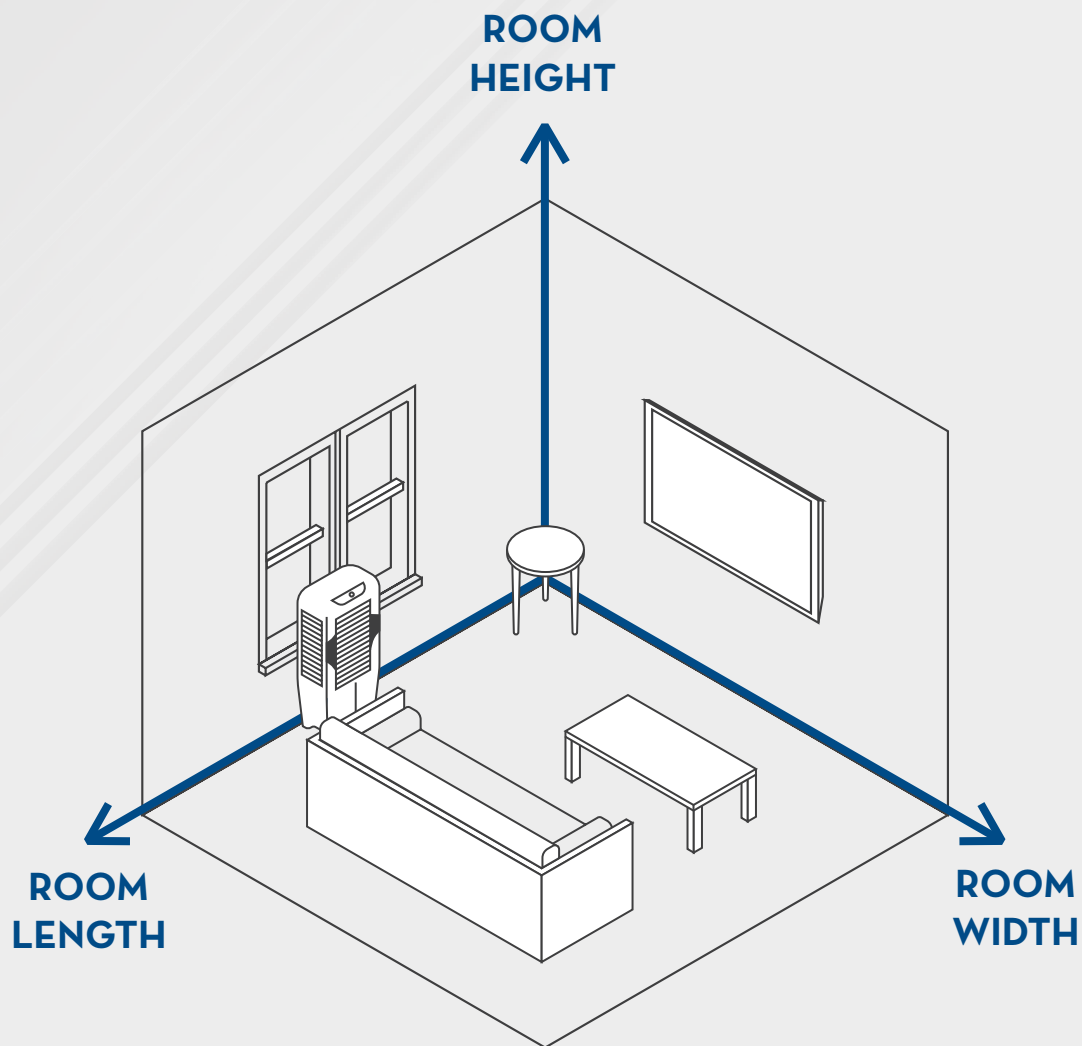


## CHOOSING THE RIGHT COOLER

The below pointers can assist you to arrive at the right model.

Selecting the right cooler for your place can be a bit tricky.

- Air Delivery denotes the total air in the room that gets changed every 2 minutes.
- Usually, air delivery is mentioned in cubic meter per hour (m<sup>3</sup>/hr).
- All you need to know is the length, width and height of your room to figure out how much air flow is needed in your room.



Use the below mentioned formula to calculate the air delivery required for your room:

$$\frac{\text{ROOM LENGTH} \times \text{ROOM WIDTH} \times \text{ROOM HEIGHT}}{2 \times 0.588578}$$

For example: If length, width and height of your room is 14ft, 12ft and 10ft respectively, then your requirement is  $14 \times 12 \times 10 / 2 / 0.588578 = 1427 \text{ m}^3/\text{hr}$ .

## WATER STORAGE CAPACITY CHART

To avoid inconvenience of filling the tank multiple times, follow the below table for ideal size of water storage capacity your cooler should have. This is an indicative chart. Certain coolers are provided with auto-fill systems for continuous water supply.

Area (in sq.ft)	Storage Capacity (in Ltrs.)
Upto 160	15
161 - 300	25
301 - 614	40
615 - 860	55+

## COOLING PADS

Coolers use two types of cooling pads:

### Honeycomb Cooling Pad



Honeycomb Cooling Pads are made of cellulose material. They are high density pads that can absorb and retain more water giving maximum cooling comfort. They have longer life and are low on maintenance.

### Wood Wool Cooling Pad



Wood Wool Cooling Pads are made from wood shavings. They are cheaper but need maintenance and have shorter life.

## INDEX



### DESERT COOLERS

Pg. 09

Desert Coolers are designed for large area coverage and comes with higher tank capacity. They work efficiently for long operational hours and provides higher air flow to maximise cooling in the harshest of summer. It can be used in houses, bungalows, flats, banquet halls, prayer houses, restaurants, etc.

Suitable for indoor and outdoor.

### PERSONAL COOLERS

Pg. 23

Personal coolers are compact and portable units that take care of your cooling needs in close proximity like study table, bed, sofa, dining table, kitchen office desk and shop counters. These coolers are essentially meant to provide cooling comfort to an individual.

Suitable for indoor.







## TOWER COOLERS

Pg. 33

Tower coolers are tall, sleek and compact, making it easier to slide into any corners of your house for achieving cooling comfort with air throw at desired height.

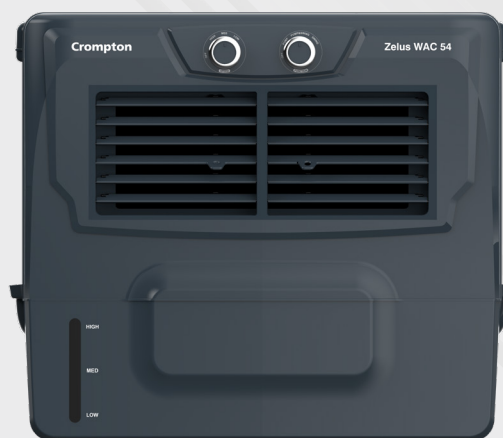
Suitable for indoor.

## WINDOW COOLERS

Pg. 38

Window coolers as the name suggests can be mounted on the window, enabling better cooling as fresh air gets sucked from outside. It doesn't block your space and occupies zero carpet area. With trolley, the cooler can be used as a portable unit.

Suitable for indoor and outdoor.



## INDUSTRIAL COOLERS

Pg. 41

Industrial Coolers are designed for large spaces like restaurants, marriage halls, hospital areas. It comes with big tank capacity, powerful fan with ball bearing technology. Strong build up coolers can work in robust weather conditions.

Suitable for outdoor.

Cooling Nahi,  
***Jaldi Cooling***



***Desert Range***

OPTIMUS 65 IoT

OPTIMUS 65i



5500 m<sup>3</sup>/hr  
air delivery

650 sq.ft  
area coverage

High Density  
Honeycomb Pads



Superior Performance  
With Bearing Motor

	Optimus 65 IoT	Optimus 65i
Litres	65	65
Length (in mm)	705	705
Width (in mm)	470	470
Height (in mm)	1170	1170

#### OPTIMUS 65 IoT



**Smart IoT Enabled  
Operations**  
For convenience and ease of use



**Mobile App**

#### FEATURES



**Digital Operations**  
For convenience and  
ease of use



**Best in Class  
Air Delivery**  
Highest air flow in  
desert cooler segment



**EverLast Pump**  
Works even with hard water



**Large & Easy Clean  
Ice Chamber**  
For convenience & hygiene



**Humidity Control**  
Adjust cooling to  
your comfort



**Auto Drain  
Function**  
For effortless  
water draining



**Auto-Fill**  
For continuous water feed

OPTIMUS 125

OPTIMUS 100

OPTIMUS 65







5500 m3/hr  
air delivery

650 sq.ft  
area coverage

High Density  
Honeycomb Pads



Superior Performance  
With Bearing Motor

	Optimus 125	Optimus 100	Optimus 65
Litres	125	100	65
Length (in mm)	705	705	705
Width (in mm)	470	470	470
Height (in mm)	1380	1235	1170

FEATURES



**Best in Class  
Air Delivery**  
Highest air flow in  
desert cooler segment



**EverLast Pump**  
Works even with hard water



**Large & Easy Clean  
Ice Chamber**  
For convenience & hygiene



**Humidity Control**  
Adjust cooling to  
your comfort



**Auto Drain  
Function**  
For effortless  
water draining



**Auto-Fill**  
For continuous water feed



COOL BREEZE NEO DAC 80

COOL BREEZE NEO DAC 53



5000 m3/hr  
air delivery

590 sq.ft  
area coverage

Honeycomb  
Pads



Superior Performance  
With Bearing Motor

	Cool Breeze Neo DAC 80	Cool Breeze Neo DAC 53
Litres	80	53
Length (in mm)	685	685
Width (in mm)	500	500
Height (in mm)	1235	1145

FEATURES



**EverLast Pump**  
Works even with hard water



**Auto-Fill**  
For continuous water feed



**Motor with  
Overload Protection**  
For safety of motor  
and pump



**4 Way Air Deflection**  
For adjusting air stream direction  
as per your need



**Large & Easy Clean  
Ice Chamber**  
For convenience & hygiene

AVANCER DAC 95

AVANCER DAC 80

AVANCER DAC 65



5200 m3/hr  
air delivery

610 sq.ft  
area coverage

High Density  
Honeycomb Pads

 Superior Performance  
With Bearing Motor

	Avancer DAC 95	Avancer DAC 80	Avancer DAC 65
Litres	95	80	65
Length (in mm)	637	637	637
Width (in mm)	455	455	455
Height (in mm)	1255	1206	1145

FEATURES



**EverLast Pump**  
Works even with hard water



**Auto-Fill**  
For continuous water feed



**Motor with  
Overload Protection**  
For safety of motor  
and pump



**4 Way Air Deflection**  
For adjusting air stream direction  
as per your need



**Large & Easy Clean  
Ice Chamber**  
For convenience & hygiene

OZONE 88

OZONE 75

OZONE 55



4200 m<sup>3</sup>/hr  
air delivery

490 sq.ft  
area coverage

High Density  
Honeycomb Pads



Superior Performance  
With Bearing Motor

	Ozone 88	Ozone 75	Ozone 55
Litres	88	75	55
Length (in mm)	600	620	620
Width (in mm)	410	410	410
Height (in mm)	1210	1180	1110

FEATURES



**EverLast Pump**  
Works even with  
hard water



**Auto-Fill**  
For continuous  
water feed



**Motor with  
Overload Protection**  
For safety of motor and pump



**4 Way Air  
Deflection**  
For adjusting air stream  
direction as per  
your need

OZONE CLASSIC H 55



3800 m3/hr  
air delivery

410 sq.ft  
area coverage

Honeycomb  
Pads



Superior Performance  
With Bearing Motor

	Ozone Classic H 55
Litres	55
Length (in mm)	620
Width (in mm)	410
Height (in mm)	1110

FEATURES



**EverLast Pump**  
Works even with  
hard water



**Auto-Fill**  
For continuous  
water feed



**Motor with  
Overload Protection**  
For safety of motor and pump



**4 Way Air  
Deflection**  
For adjusting air stream  
direction as per  
your need



GALE DAC 90



GALE DAC 60



4000 m<sup>3</sup>/hr  
air delivery

470 sq.ft  
area coverage

Honeycomb  
Pads

	Gale DAC 90	Gale DAC 60
Litres	90	60
Length (in mm)	620	685
Width (in mm)	400	500
Height (in mm)	1200	1115

## FEATURES



**EverLast Pump**  
Works even with hard water



**Auto-Fill**  
For continuous water feed



**Motor with  
Overload Protection**  
For safety of motor  
and pump



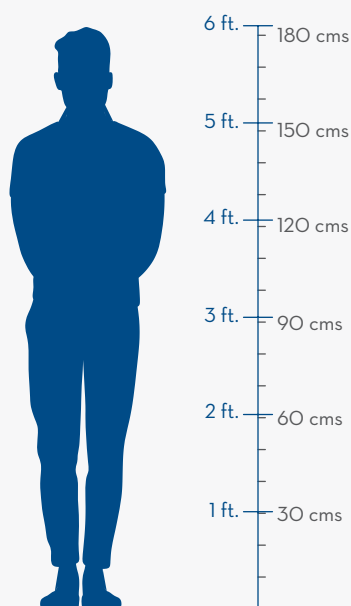
**4 Way Air Deflection**  
For adjusting air stream direction  
as per your need



**Large & Easy Clean  
Ice Chamber**  
For convenience & hygiene

# SCALE COMPARISON CHART

## Desert Coolers



Height - 117 cms



Height - 117 cms



Height - 117 cms

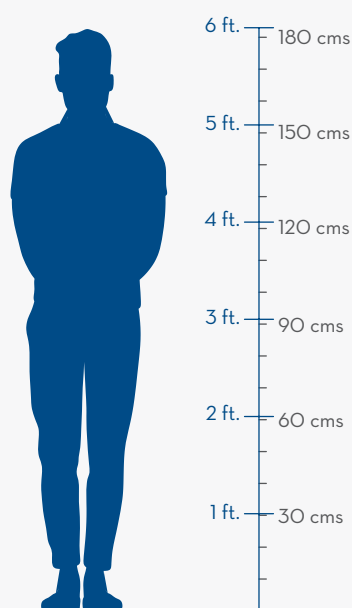


Parameters	Optimus 65 IoT	Optimus 65i	Optimus 65
Suitable Room Size (sq.ft)	650	650	650
Blower / Fan	Fan	Fan	Fan
Wattage (W)	200	200	200
Tank Capacity (L)	65	65	65
Air Delivery (m <sup>3</sup> / hr)	5500	5500	5500
IoT / Digital / Manual Operation	IoT	Digital	Manual
Remote Control	Yes	Yes	NA
Pureshield	Yes	NA	NA
Ice Chamber	Yes	Yes	Yes
Easy Access Distribution Tray	Yes	Yes	Yes
Everlast Pump	Yes	Yes	Yes
Humidity Control	Yes	Yes	Yes
Auto Drain	Yes	Yes	Yes
Auto Fill	Yes	Yes	Yes
Mosquito Nets	Yes	Yes	Yes
Fully Collapsible Louvers	Yes	Yes	Yes
Cooling Media	High Density Honeycomb Pads	High Density Honeycomb Pads	High Density Honeycomb Pads
Product Dimensions	L - 705 W - 470 H - 1170 (in mm)	L - 705 W - 470 H - 1170 (in mm)	L - 705 W - 470 H - 1170 (in mm)

Images of the products are for illustrative purposes only and may vary from the actual product.

Product is tested under lab conditions, product specifications are subject to change without prior notice

## Desert Coolers



Height - 123.5 cms



Height - 138 cms



Parameters	Optimus 100	Optimus 125
Suitable Room Size (sq.ft)	650	650
Blower / Fan	Fan	Fan
Wattage (W)	200	200
Tank Capacity (L)	100	125
Air Delivery (m <sup>3</sup> / hr)	5500	5500
IoT / Digital / Manual Operation	Manual	Manual
Remote Control	NA	NA
Pureshield	NA	NA
Ice Chamber	Yes	Yes
Easy Access Distribution Tray	Yes	Yes
Everlast Pump	Yes	Yes
Humidity Control	Yes	Yes
Auto Drain	Yes	Yes
Auto Fill	Yes	Yes
Mosquito Nets	Yes	Yes
Fully Collapsible Louvers	Yes	Yes
Cooling Media	High Density Honeycomb Pads	High Density Honeycomb Pads
Product Dimensions	L - 705 W - 470 H - 1235 (in mm)	L - 705 W - 470 H - 1380 (in mm)

Images of the products are for illustrative purposes only and may vary from the actual product.  
Product is tested under lab conditions, product specifications are subject to change without prior notice

## Desert Coolers



	Avancer DAC 65	Avancer DAC 80	Avancer DAC 95
Suitable Room Size (sq.ft)	610	610	610
Blower / Fan	Fan	Fan	Fan
Wattage (W)	190	190	190
Tank Capacity (L)	65	80	95
Air Delivery (m <sup>3</sup> / hr)	5200	5200	5200
IoT / Digital / Manual Operation	Manual	Manual	Manual
Remote Control	No	No	No
Pureshield	No	No	No
Ice Chamber	No	No	No
Easy Access Distribution Tray	No	No	No
Everlast Pump	Yes	Yes	Yes
Humidity Control	No	No	No
Auto Drain	No	No	No
Auto Fill	Yes	Yes	Yes
Mosquito Nets	No	No	No
Fully Collapsible Louvers	Yes	Yes	No
Cooling Media	High Density Honeycomb	High Density Honeycomb	High Density Honeycomb
Product Dimensions	L - 637 W - 455 H - 1145 (in mm)	L - 637 W - 455 H - 1206 (in mm)	L - 637 W - 455 H - 1255 (in mm)

Images of the products are for illustrative purposes only and may vary from the actual product.  
Product is tested under lab conditions, product specifications are subject to change without prior notice



# SCALE COMPARISON CHART

## Desert Coolers

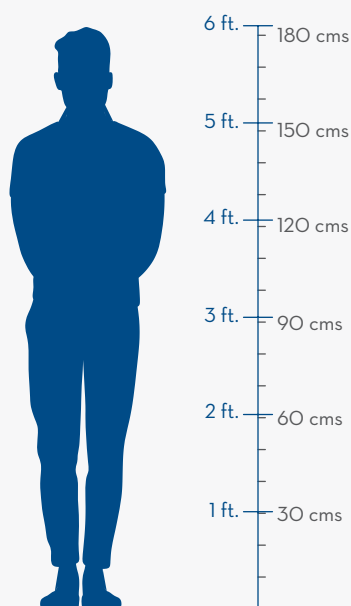


Parameters	Ozone 55	Ozone 75	Ozone 88
Suitable Room Size (sq.ft)	490	490	490
Blower / Fan	Fan	Fan	Fan
Wattage (W)	190	190	190
Tank Capacity (L)	55	75	55
Air Delivery (m <sup>3</sup> / hr)	4200	4200	4200
IoT / Digital / Manual Operation	Manual	Manual	Manual
Remote Control	NA	NA	NA
Pureshield	NA	NA	NA
Ice Chamber	Yes	Yes	Yes
Easy Access Distribution Tray	NA	NA	NA
Everlast Pump	Yes	Yes	Yes
Humidity Control	NA	NA	NA
Auto Drain	NA	NA	NA
Auto Fill	Yes	Yes	Yes
Mosquito Nets	NA	NA	NA
Fully Collapsible Louvers	NA	NA	NA
Cooling Media	High-Density Honeycomb Pads	High Density Honeycomb Pads	High Density Honeycomb Pads
Product Dimensions	L - 620 W - 410 H - 1110 (in mm)	L - 620 W - 410 H - 1180 (in mm)	L - 620 W - 410 H - 1210 (in mm)

Images of the products are for illustrative purposes only and may vary from the actual product.  
Product is tested under lab conditions, product specifications are subject to change without prior notice

# SCALE COMPARISON CHART

## Desert Coolers



Height- 11 cms



Height- 114 cms



Height- 123 cms

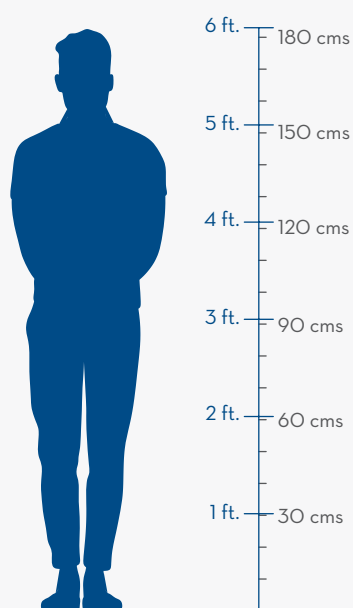


Parameters	Ozone Classic H55	Cool Breeze DAC 53	Cool Breeze DAC 80
Suitable Room Size (sq.ft)	490	588	588
Blower / Fan	Fan	Fan	Fan
Wattage (W)	150	200	200
Tank Capacity (L)	55	53	80
Air Delivery (m <sup>3</sup> / hr)	3800	5000	5000
IoT / Digital / Manual Operation	Manual	Manual	Manual
Remote Control	NA	No	No
Pureshield	NA	No	No
Ice Chamber	Yes	Yes	Yes
Easy Access Distribution Tray	NA	No	No
Everlast Pump	Yes	Yes	Yes
Humidity Control	NA	No	No
Auto Drain	NA	No	No
Auto Fill	Yes	No	No
Mosquito Nets	NA	No	No
Fully Collapsible Louvers	NA	No	No
Cooling Media	Honeycomb Pads	Honeycomb Pads	Honeycomb Pads
Product Dimensions	L - 620 W - 410 H - 1110 (in mm)	L - 685 W - 500 H - 1145 (in mm)	L - 685 W - 500 H - 1235 (in mm)

Images of the products are for illustrative purposes only and may vary from the actual product.

Product is tested under lab conditions, product specifications are subject to change without prior notice

## Desert Coolers



Height - 111.5 cms



Height - 120 cms



Parameters	Gale DAC 60	Gale DAC 90
Suitable Room Size (sq.ft)	470	470
Blower / Fan	Fan	Fan
Wattage (W)	150	150
Tank Capacity (L)	60	90
Air Delivery (m <sup>3</sup> / hr)	4000	4000
IoT / Digital / Manual Operation	Manual	Manual
Remote Control	No	No
Pureshield	No	No
Ice Chamber	Yes	Yes
Easy Access Distribution Tray	No	No
Everlast Pump	Yes	Yes
Humidity Control	No	No
Auto Drain	No	No
Auto Fill	No	No
Mosquito Nets	No	No
Fully Collapsible Louvers	Yes	Yes
Cooling Media	Honeycomb Pads	Honeycomb Pads
Product Dimensions	L - 620 W - 420 H - 1115 (in mm)	L - 620 W - 420 H - 1200 (in mm)

Images of the products are for illustrative purposes only and may vary from the actual product.  
Product is tested under lab conditions, product specifications are subject to change without prior notice

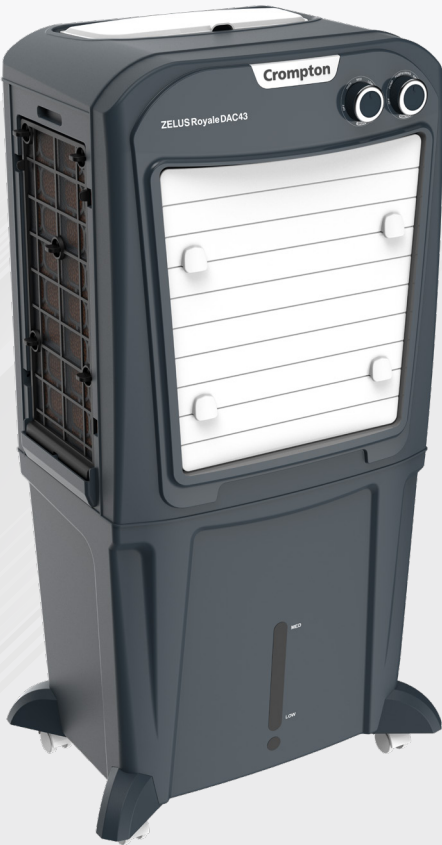
Cooling Nahi,  
***Jaldi Cooling***

Crompton

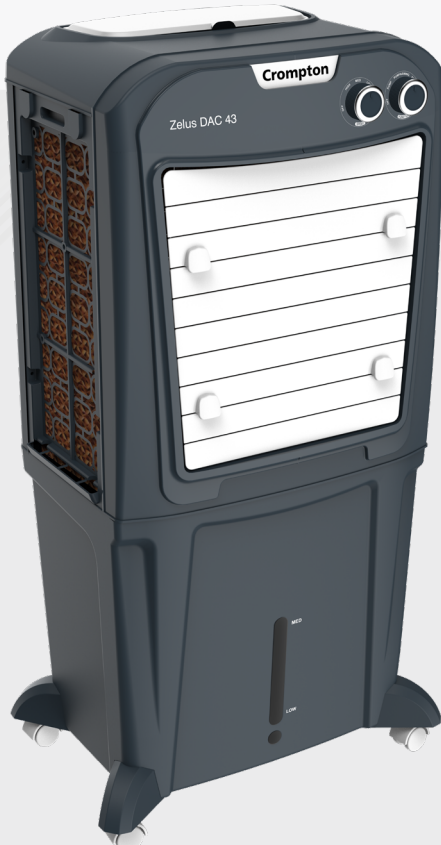
Marvel Neo 23

***Personal Range***

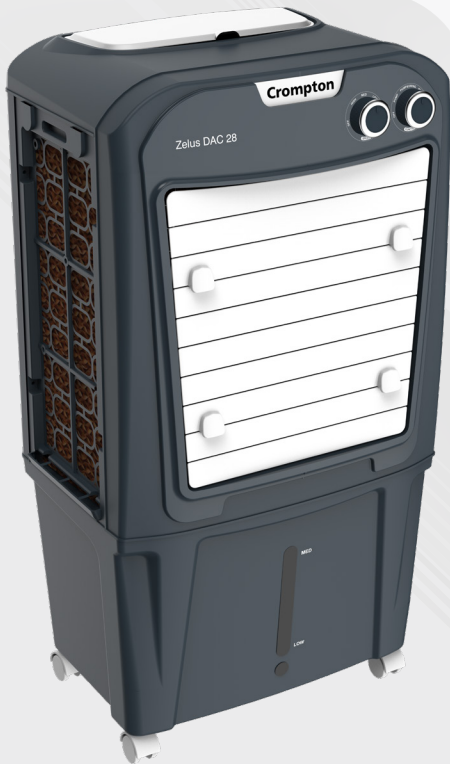
ZELUS ROYALE 43



ZELUS 43



ZELUS 28



High Density  
Honeycomb Pads



Superior Performance  
With Bearing Motor

	Zelus Royale 43	Zelus 43	Zelus 28
Litres	43	43	28
Length (in mm)	520	520	520
Width (in mm)	350	350	350
Height (in mm)	995	990	865
Air Delivery (m3/hr)	2250	2350	2350
Area Coverage (sq. ft)	260	280	280

FEATURES



**EverLast Pump**  
Works even with hard water



**Auto-Fill**  
For continuous water feed



**Motor with  
Overload Protection**  
For safety of motor  
and pump



**4 Way Air Deflection**  
For adjusting air stream direction  
as per your need



**Auto Swing Louvers**  
With motorised vertical  
louver movement



**Large & Easy Clean  
Ice Chamber**  
For convenience & hygiene



MARVEL NEO 40

MARVEL NEO 23



1300 m3/hr  
air delivery

150 sq.ft  
area coverage

High Density  
Honeycomb Pads



Superior Performance  
With Bearing Motor

	Marvel Neo 40	Marvel Neo 23
Litres	40	23
Length (in mm)	490	490
Width (in mm)	380	380
Height (in mm)	915	775

FEATURES



**EverLast Pump**  
Works even with  
hard water



**Motor with  
Overload Protection**  
For safety of motor and pump



**Auto Swing  
Louvers**  
With motorised vertical  
louver movement



**4 Way Air  
Deflection**  
For adjusting air stream  
direction as per  
your need

AURA PAC 38 L



2800 m<sup>3</sup>/hr  
air delivery

260 sq.ft  
area coverage

High Density  
Honeycomb Pads



Superior Performance  
With Bearing Motor

	AURA PAC
Litres	38
Length (in mm)	445
Width (in mm)	395
Height (in mm)	900

FEATURES



**EverLast Pump**  
Works even with  
hard water



**Motor with  
Overload Protection**  
For safety of motor and pump



**4 Way Air  
Deflection**  
For adjusting air stream  
direction as per  
your need



**Auto Swing  
Louvers**  
With motorised vertical  
louwer movement

JEDI PAC 35

JEDI PAC 22

JEDI PAC16



1200 m3/hr  
air delivery

150 sq.ft  
area coverage

High Density  
Honeycomb Pads

 Superior Performance  
With Bearing Motor

	Jedi PAC 35	Jedi PAC 22	Jedi PAC 16
Litres	35	22	16
Length (in mm)	400	400	400
Width (in mm)	290	290	290
Height (in mm)	852	765	655

FEATURES



EverLast Pump  
Works even with  
hard water



Motor with  
Overload Protection  
For safety of motor and pump



Auto Swing  
Louvers  
With motorised vertical  
louver movement



4 Way Air  
Deflection  
For adjusting air stream  
direction as per  
your need

GINIE NEO



650 m3/hr  
air delivery

80 sq.ft  
area coverage

High Density  
Honeycomb Pads



Superior Performance  
With Bearing Motor

	Ginie Neo
Litres	10
Length (in mm)	285
Width (in mm)	265
Height (in mm)	515

FEATURES



**Mosquito Nets**  
Ensures health & hygiene



**Motor with Overload Protection**  
For safety of motor and pump



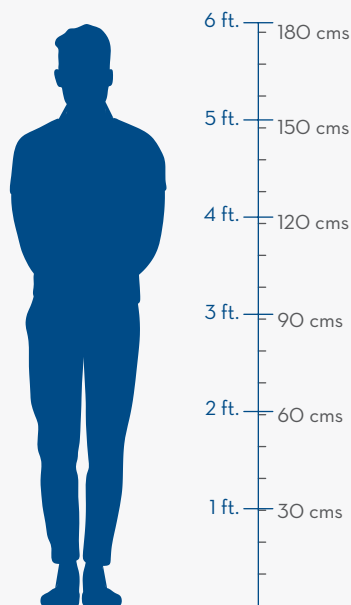
**4 Way Air Deflection**  
For adjusting air stream direction as per your need



**Auto Swing Louvers**  
With motorised vertical louver movement

# SCALE COMPARISON CHART

## Personal Coolers



Height - 86.5 cms



Height - 96 cms



Height - 99.5 cms



Parameters	Zelus PAC 28	Zelus PAC 43	Zelus Royale PAC 43
Suitable Room Size (sq.ft)	277	277	260
Blower / Fan	Fan	Fan	Fan
Wattage (W)	105	105	105
Tank Capacity (L)	28	43	43
Air Delivery (m <sup>3</sup> / hr)	2350	2350	2250
IoT / Digital / Manual Operation	Manual	Manual	Manual
Remote Control	No	No	No
Pureshield	No	No	No
Ice Chamber	Yes	Yes	Yes
Easy Access Distribution Tray	No	No	No
Everlast Pump	Yes	Yes	Yes
Humidity Control	No	No	No
Auto Drain	No	No	No
Auto Fill	No	No	Yes
Mosquito Nets	No	No	No
Fully Collapsible Louvers	Yes	Yes	Yes
Cooling Media	High Density Honeycomb Pads	High Density Honeycomb Pads	High Density Honeycomb Pads
Product Dimensions	L - 520 W - 350 H - 865 (in mm)	L - 520 W - 350 H - 960 (in mm)	L - 520 W - 350 H - 995 (in mm)

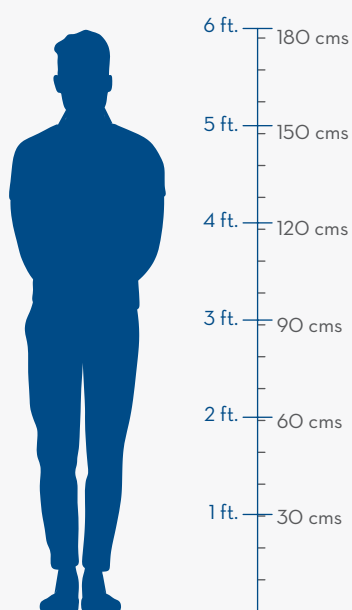
Images of the products are for illustrative purposes only and may vary from the actual product.

Product is tested under lab conditions, product specifications are subject to change without prior notice



# SCALE COMPARISON CHART

## Personal Coolers



Height - 51.5 cms



Height - 65.5 cms

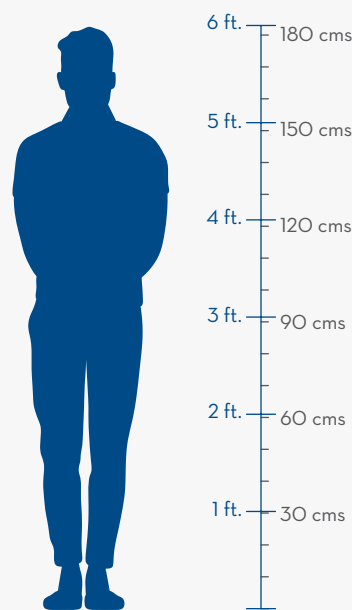


Parameters	Marvel Neo 23	Marvel Neo 40
Suitable Room Size (sq.ft)	80	150
Blower / Fan	Blower	Blower
Wattage (W)	130	130
Tank Capacity (L)	10	16
Air Delivery (m <sup>3</sup> / hr)	650	1200
IoT / Digital / Manual Operation	Manual	Manual
Remote Control	NA	NA
Ice Chamber	Yes	Yes
Easy Access Distribution Tray	NA	NA
Everlast Pump	NA	Yes
Auto Fill	NA	NA
Mosquito Nets	Yes	NA
Fully Collapsible Louvers	NA	NA
Cooling Media	High Density Honeycomb Pads	Honeycomb Pads
Product Dimensions	L - 285 W - 265 H - 515 (in mm)	L - 400 W - 290 H - 655 (in mm)

Images of the products are for illustrative purposes only and may vary from the actual product.  
Product is tested under lab conditions, product specifications are subject to change without prior notice

# SCALE COMPARISON CHART

## Personal Coolers



Height - 90 cms



Height - 51.5 cms

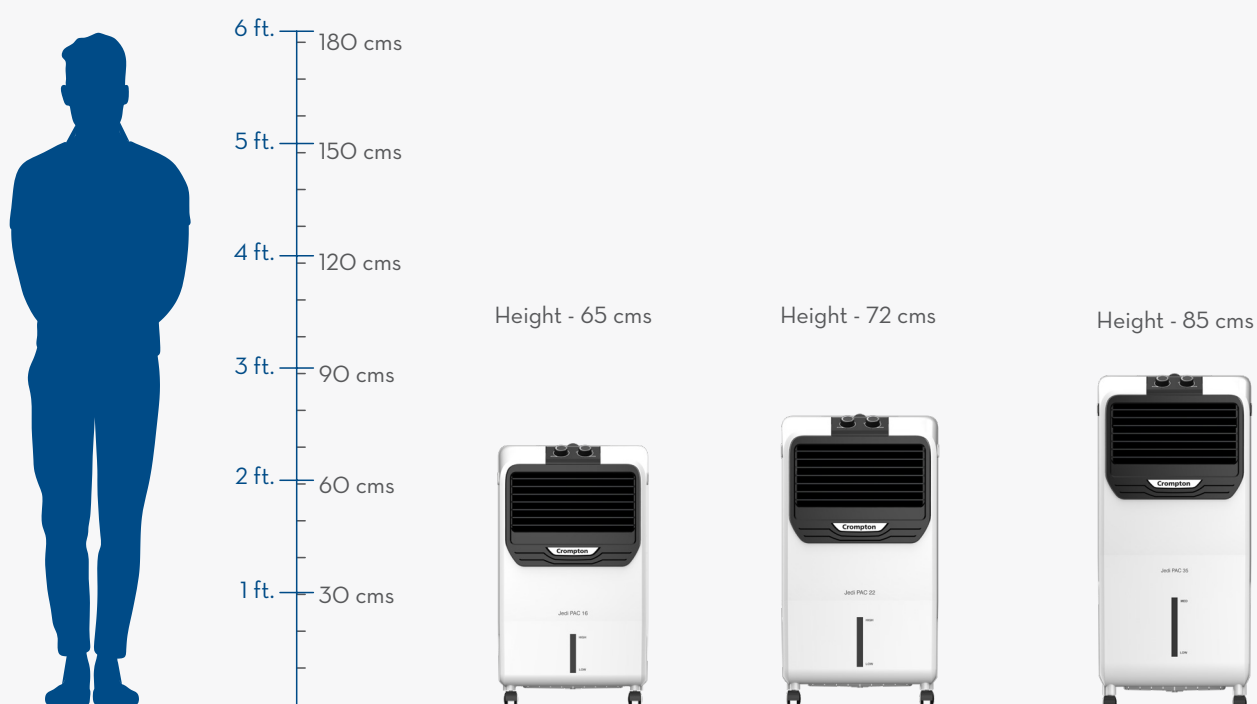


Parameters	Aura PAC	Ginie Neo
Suitable Room Size (sq.ft)	260	80
Blower / Fan	Fan	Blower
Wattage (W)	100	130
Tank Capacity (L)	38	10
Air Delivery (m <sup>3</sup> / hr)	2800	650
IoT / Digital / Manual Operation	Manual	Manual
Remote Control	No	NA
Ice Chamber	No	Yes
Easy Access Distribution Tray	No	NA
Everlast Pump	Everlast Pump	NA
Auto Fill	Yes	NA
Mosquito Nets	No	Yes
Fully Collapsible Louvers	Yes	NA
Cooling Media	High Density Honeycomb Pads	High Density Honeycomb Pads
Product Dimensions	L - 445 W - 395 H - 900 (in mm)	L - 285 W - 265 H - 515 (in mm)

Images of the products are for illustrative purposes only and may vary from the actual product.  
Product is tested under lab conditions, product specifications are subject to change without prior notice

# SCALE COMPARISON CHART

## Personal Coolers



Parameters	Jedi PAC 16	Jedi PAC 22	Jedi PAC 35
Suitable Room Size (sq.ft)	150	150	150
Blower / Fan	Blower	Blower	Blower
Wattage (W)	130	130	130
Tank Capacity (L)	16	22	35
Air Delivery (m <sup>3</sup> / hr)	1200	1200	1200
IoT / Digital / Manual Operation	Manual	Manual	Manual
Remote Control	NA	NA	NA
Ice Chamber	Yes	Yes	Yes
Easy Access Distribution Tray	NA	NA	NA
Everlast Pump	Yes	Yes	Yes
Auto Fill	NA	NA	NA
Mosquito Nets	NA	NA	NA
Fully Collapsible Louvers	NA	NA	NA
Cooling Media	Honeycomb Pads	Honeycomb Pads	Honeycomb Pads
Product Dimensions	L - 400 W - 290 H - 655 (in mm)	L - 400 W - 290 H - 725 (in mm)	L - 400 W - 290 H - 852 (in mm)

Images of the products are for illustrative purposes only and may vary from the actual product.  
Product is tested under lab conditions, product specifications are subject to change without prior notice

Cooling Nahi,  
***Jaldi Cooling***



***Tower Range***

OPTIMUS NEO 52

OPTIMUS NEO 35i

OPTIMUS NEO 35

OPTIMUS NEO 27



1350 m3/hr  
air delivery

160 sq.ft  
area coverage

High Density  
Honeycomb Pads



Superior Performance  
With Bearing Motor

	Optimus NEO 52	Optimus NEO 35i	Optimus NEO 35	Optimus NEO 27
Litres	52	35	35	27
Length (in mm)	365	425	425	340
Width (in mm)	395	380	380	370
Height (in mm)	1325	1085	1085	980

## FEATURES



**EverLast Pump**  
Works even with  
hard water



**Auto-Fill**  
For continuous  
water feed



**4 Way Air  
Deflection**  
For adjusting air stream  
direction as per  
your need



**Large & Easy Clean  
Ice Chamber**  
For convenience & hygiene



**Digital Operations**  
For convenience and  
ease of use



SUREBREEZE 34

SUREBREEZE 24



1950 m3/hr  
air delivery

230 sq.ft  
area coverage

High Density  
Honeycomb Pads

 Superior Performance  
With Bearing Motor

	Surebreeze 34	Surebreeze 24
Litres	34	24
Length (in mm)	450	390
Width (in mm)	385	325
Height (in mm)	1080	965

FEATURES



**EverLast Pump**  
Works even with hard water



**Mosquito Nets**  
Ensures health & hygiene



**Auto Swing Louvers**  
With motorised vertical louver movement



**Motor with Overload Protection**  
For safety of motor and pump



**Large & Easy Clean Ice Chamber**  
For convenience & hygiene



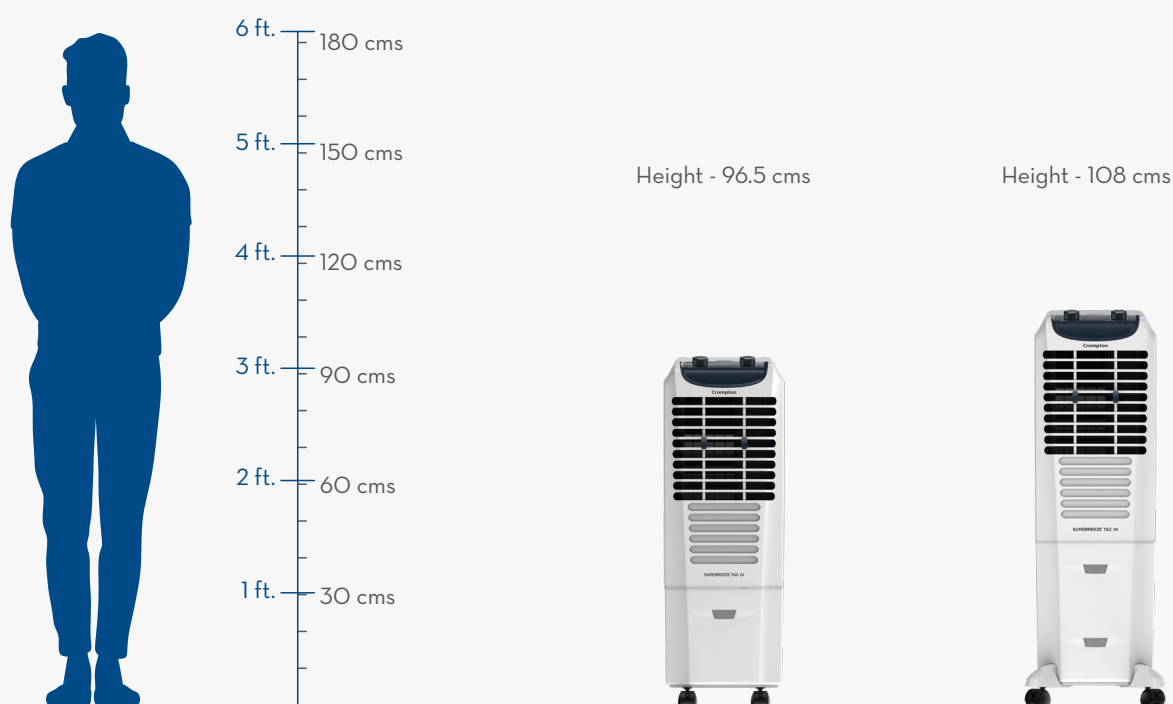
**4 Way Air Deflection**  
For adjusting air stream direction as per your need



**Auto-Fill**  
For continuous water feed

# SCALE COMPARISON CHART

## Tower Coolers



Parameters	Surebreeze 24	Surebreeze 34
Suitable Room Size (sq.ft)	230	230
Blower / Fan	Blower	Blower
Wattage (W)	140	140
Tank Capacity (L)	24	34
Air Delivery (m <sup>3</sup> / hr)	1950	1950
IoT / Digital / Manual Operation	Manual	Manual
Remote Control	NA	NA
Ice Chamber	Yes	Yes
Easy Access Distribution Tray	NA	NA
Everlast Pump	Yes	Yes
Auto Fill	NA	NA
Mosquito Nets	Yes	Yes
Fully Collapsible Louvers	NA	NA
Cooling Media	High Density Honeycomb Pads	High Density Honeycomb Pads
Product Dimensions	L - 390 W - 325 H - 965 (in mm)	L - 450 W - 385 H - 1080 (in mm)

Images of the products are for illustrative purposes only and may vary from the actual product.  
Product is tested under lab conditions, product specifications are subject to change without prior notice

# SCALE COMPARISON CHART

## Tower Coolers

Height - 98 cms



Height - 108.5 cms



Height - 108.5 cms



Height - 132.5 cms



Optimus Neo 27	Optimus Neo 35	Optimus Neo 35i	Optimus Neo 52
160	160	160	160
Blower	Blower	Blower	Blower
130	130	130	130
27	35	35	52
1350	1350	1350	1350
Manual	Manual	Digital	Manual
NA	NA	Yes	NA
Yes	Yes	Yes	Yes
Yes	Yes	Yes	Yes
Yes	Yes	Yes	Yes
Yes	Yes	Yes	Yes
Yes	Yes	Yes	Yes
Yes	Yes	Yes	Yes
High Density Honeycomb Pads	High Density Honeycomb Pads	High Density Honeycomb Pads	High Density Honeycomb Pads
L - 340 W - 370 H - 980 (in mm)	L - 425 W - 380 H - 1085 (in mm)	L - 425 W - 380 H - 1085 (in mm)	L - 365 W - 395 H - 1325 (in mm)

Images of the products are for illustrative purposes only and may vary from the actual product.

Product is tested under lab conditions, product specifications are subject to change without prior notice

Cooling Nahi,  
***Jaldi Cooling***



***Window Range***

OPTIMUS WAC 70

ZELUS WAC 54



Woodwool  
Cooling Pads



Superior Performance  
With Bearing Motor

	Optimus WAC 70	Zelus WAC 54
Litres	70	54
Length (in mm)	685	645
Width (in mm)	670	570
Height (in mm)	845	560
Air Delivery (m3/hr)	5500	1700
Area Coverage (sq. ft)	650	200

FEATURES



**EverLast Pump**  
Works even with hard water



**Auto-Fill**  
For continuous water feed



**Motor with  
Overload Protection**  
For safety of motor  
and pump



**4 Way Air Deflection**  
For adjusting air stream direction  
as per your need

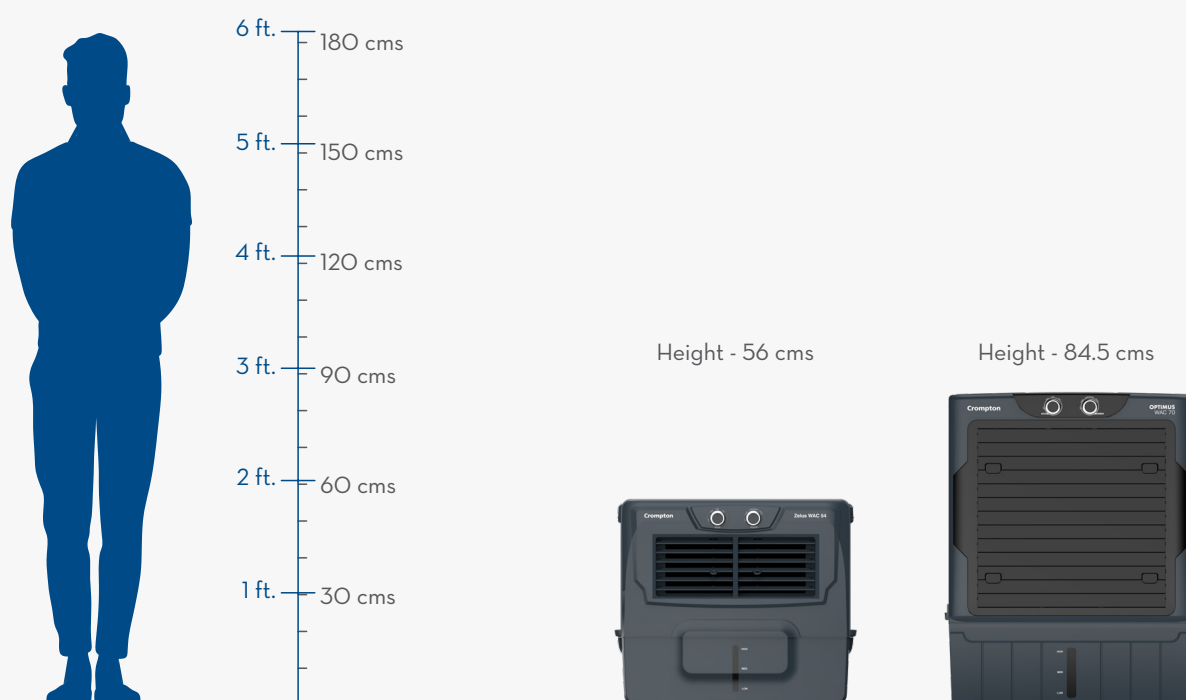


**Auto Swing  
Louvers**  
With motorised vertical  
louver movement



# SCALE COMPARISON CHART

## Window Coolers



Parameters	Zelus WAC 54	Optimus WAC 70
Suitable Room Size (sq.ft)	200	650
Blower / Fan	Blower	Fan
Wattage (W)	200	200
Tank Capacity (L)	54	70
Air Delivery (m <sup>3</sup> / hr)	1700	5500
IoT / Digital / Manual Operation	Manual	Manual
Remote Control	NA	NA
Ice Chamber	NA	Yes
Metal Trolley	Optional	Yes
Everlast Pump	NA	Yes
Auto Fill	Yes	NA
Mosquito Nets	NA	NA
Fully Collapsible Louvers	NA	Yes
Cooling Media	Woodwool Pads	Woodwool Pads
Product Dimensions	L - 645 W - 570 H - 560 (in mm)	L - 685 W - 670 H - 845 (in mm)

Images of the products are for illustrative purposes only and may vary from the actual product.  
Product is tested under lab conditions, product specifications are subject to change without prior notice

Cooling Nahi,  
***Jaldi Cooling***



***Industrial Range***

INDIBREEZE DAC 135

INDIBREEZE DAC 95



Honeycomb  
Pads



Superior Performance  
With Bearing Motor

	IndiBreeze DAC 135	IndiBreeze DAC 95
Litres	135	95
Length (in mm)	865	780
Width (in mm)	650	500
Height (in mm)	1480	1435
Air Delivery (m3/hr)	8500	6500
Area Coverage (sq. ft)	1000	770

FEATURES



**EverLast Pump**  
Works even with hard water



**Auto-Fill**  
For continuous water feed



**Motor with  
Overload Protection**  
For safety of motor  
and pump



**4 Way Air Deflection**  
For adjusting air stream direction  
as per your need



**Heavy Duty  
Caster Wheels**

# SCALE COMPARISON CHART

## Industrial Coolers



Parameters	Indibreeze DAC 95	Indibreeze DAC 135
Suitable Room Size (sq.ft)	770	1000
Blower / Fan	Fan	Fan
Wattage (W)	280	315
Tank Capacity (L)	95	135
Air Delivery (m <sup>3</sup> / hr)	6500	8500
IoT / Digital / Manual Operation	Manual	Manual
Remote Control	NA	NA
Ice Chamber	NA	NA
Easy Access Distribution Tray	NA	NA
Everlast Pump	Yes	Yes
Auto Fill	Yes	Yes
Mosquito Nets	NA	NA
Fully Collapsible Louvers	Yes	NA
Cooling Media	Honeycomb Pads	Honeycomb Pads
Product Dimensions	L - 780 W - 500 H - 1435 (in mm)	L - 865 W - 650 H - 1480 (in mm)

Images of the products are for illustrative purposes only and may vary from the actual product.  
Product is tested under lab conditions, product specifications are subject to change without prior notice

## Notes:

[illegible]



**CROMPTON GREAVES  
CONSUMER ELECTRICALS LIMITED**

REGISTERED OFFICE:

05GBD, Godrej Business District,  
Pirojshanagar, Vikhroli (West),  
Mumbai, Maharashtra - 400079

[www.crompton.com](http://www.crompton.com)

Customer Service:

Helpline: 1800-419-0505

Whatsapp: 7428713838

Email: [consumer.support@crompton.co.in](mailto:consumer.support@crompton.co.in)